

Standard documentation

In short: DevDep.pdf

Details: EIMAdm.pdf

Conversion steps

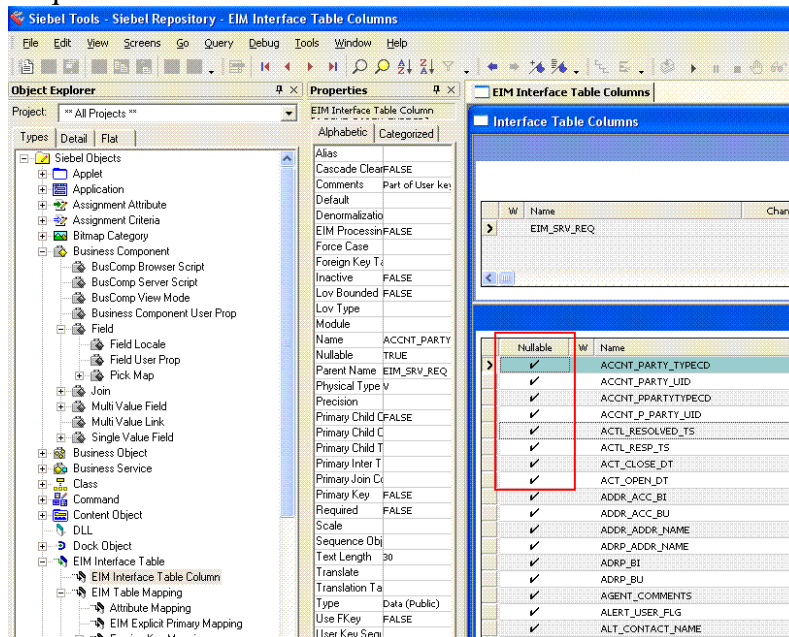
Populate interface tables

Siebel interface tables starts with EIM*, for example EIM_SRV_REQ

Required control columns:

| | |
|------------------|--|
| IF_ROW_BATCH_NUM | batch number which corresponds with BATCH parameter in control file .ifb |
| IF_ROW_STAT | constant „FOR_IMPORT” After import value in this column will be replaced with ‘IMPORTED’ or error code. |
| ROW_ID | unique value in format ##-###-### This row_id is not copied into row_id destination table. |

Required data columns:



Prepare control file .ifb and put it into /siebel/siebsrvr/admin/

Sample ifb file

| | |
|--|-----------------------------|
| [Siebel Interface Manager] USER_NAME = "SADMIN" PASSWORD = "SADMIN" PROCESS = Import SR | ← Name of the section below |
|--|-----------------------------|

| | |
|---|---|
| <pre>[Import SR] TYPE = SHELL INCLUDE = "Import HEADER" INCLUDE = "Import DETAIL" [Import HEADER] TYPE = IMPORT BATCH = \$BATCH TABLE = EIM_SRV_REQ ONLY BASE TABLES = S_SRV_REQ, S_SRV_REQ_BU UPDATE ROWS = FALSE [Import DETAIL] TYPE = IMPORT BATCH = \$BATCH TABLE = EIM_SR_DTL UPDATE ROWS = FALSE</pre> | <pre><- Shell means that this section refers to others sections <- Name of the section below <- IMPORT: Action to perform <- \$BATCH is a parameter passed by job as "Extended parameters" <- destination tables <- ■</pre> |
|---|---|

You can also export, delete or merging files using .ifb, sample file

```
[Siebel Interface Manager]
  USER NAME = "SADMIN"
  PASSWORD = "SADMIN"
  PROCESS = Delete SR

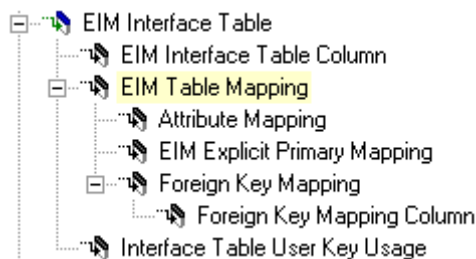
[Delete SR]
  TYPE = SHELL
  INCLUDE = "Delete HEADER"

[Delete HEADER]
  TYPE = DELETE
  BATCH = $BATCH
  TABLE = EIM_SRV_REQ
  DELETE EXACT = TRUE
  ONLY BASE TABLES = S_SRV_REQ
```

See default_bck.ifb for more details.

(Optional) Review mappings in Siebel Tools or in Application

In Tools



EIM Interface Table Column – all columns in interface table

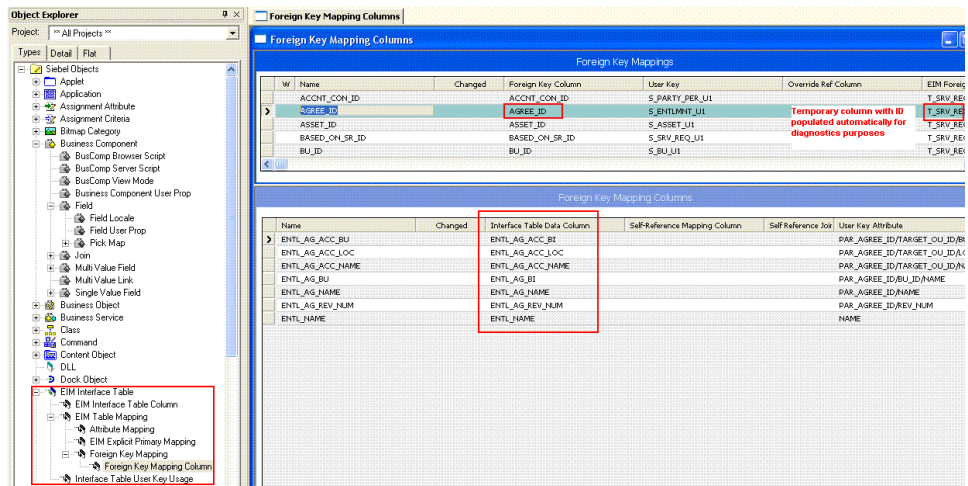
EIM Table Mapping – destination tables

Attribute Mapping – column level mapping

EIM Explicit Primary Mapping - ■

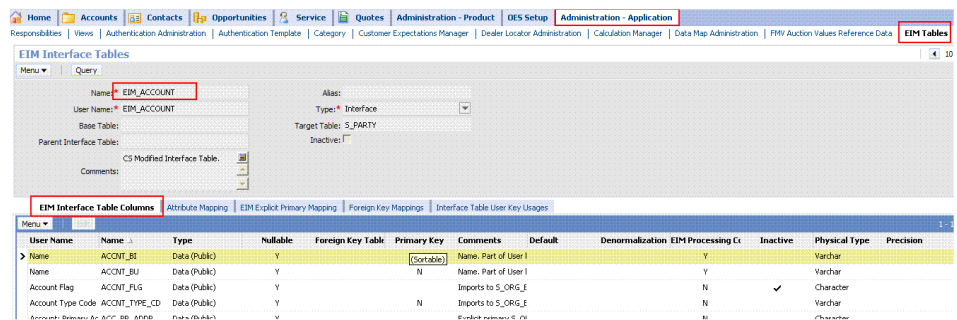
Foreign Key Mapping – Foreign keys are usually passed by names rather than by Id.

Here you can review what column need to be populated.



More about how to create mappings:
<http://www.gosiebel.com/us/siebel-eim.html>

In Application

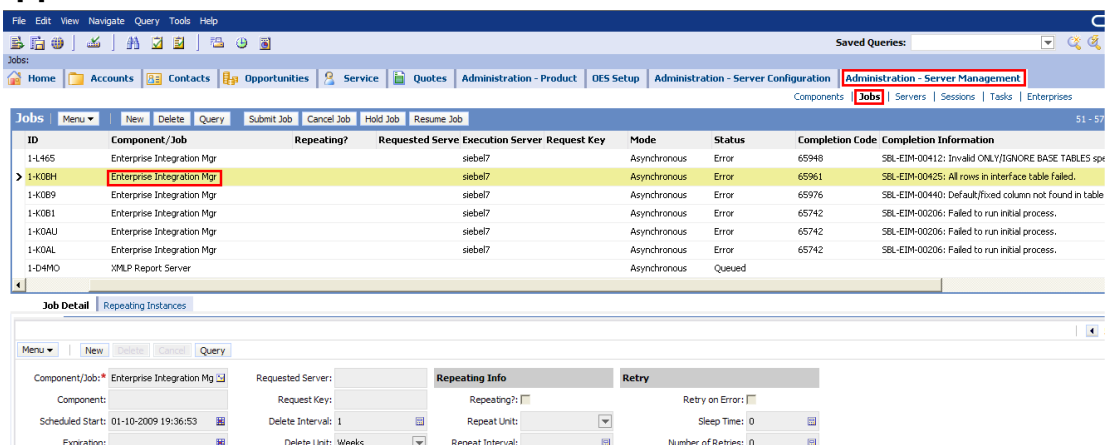


Run import

Be aware: Data from the batch will be imported even if batch was once imported, no meaning of status.

?to verify: BC components validations are examined during import

From Application



| Name | Value | Required? |
|--------------------|------------|-----------|
| Configuration file | sr_imp.ifb | |
| Error Flags | 3 | |
| Extended Parameter | BATCH=1 | |
| SQL Trace Flags | 4 | |
| Trace Flags | 3 | |

Remember to submit job, wait until it finishes.

From Command line

See standard documentation

Review results

Columns in table after report

IF_ROW_STAT

IF_ROW_STAT_NUM

= „IMPORTED” => OK. !

otherwise see log

zawiera numer referencyjny do logu

(look for „pass <ref num>” string in log)

From Application

Tab Tasks

From file system

/siebel/siebsrvr/enterprises/PRIM/siebel7/log/EIM.log*

```
-----
Process [Import HEADER] had 1 row fail
on EIM_SRV_REQ for batch 4 in step 4, pass 102: ← numer referencyjny
Failed to resolve foreign key value. (severity 8)
```

```
Interface table:
EIM_SRV_REQ (EIM_SRV_REQ)
-----
ACCNT_PARTY_TYPECD (Party Type Code)
ACCNT_PARTY_UID (Party User Identifier)
ACCNT_PPARTYTYPECD (Party Type Code)
ACCNT_P_PARTY_UID (Party User Identifier)
```

```
Base table:
S_SRV_REQ (Service Request)
-----
ACCNT_CON_ID (ACCNT_CON_ID)
```

```
This is a foreign key value in the base table and the values in the interface
table did not resolve to existing values. Verify that the IF columns correspond
to existing base table rows.
```

```
This failure did not eliminate the rows from further processing. Processing
will continue for other columns in the same and in other destination base
table.
```

Nie każdy komunikat w logu jest błędem krytycznym. Message above is not a critical error

(“This failure did not eliminate the rows from further processing”).